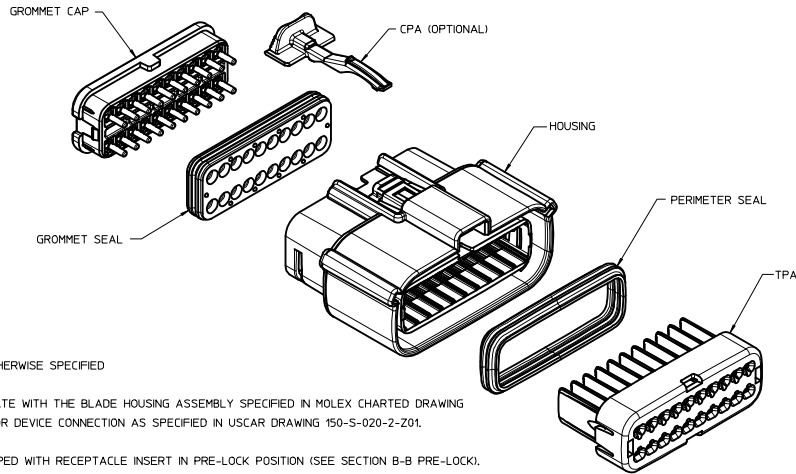
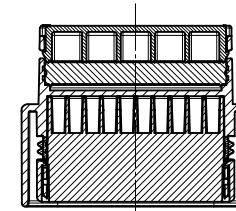
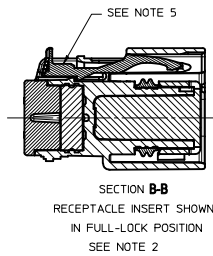
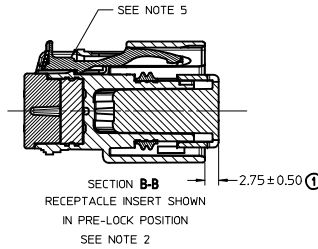


KEYING OPTION
SEE TABLE

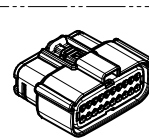
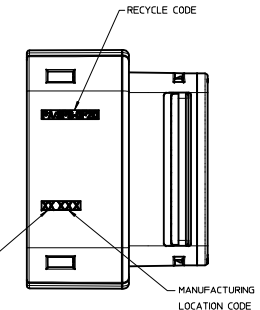
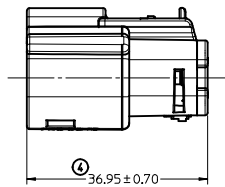
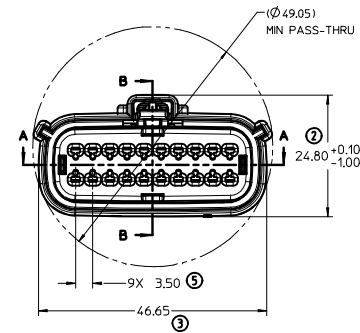
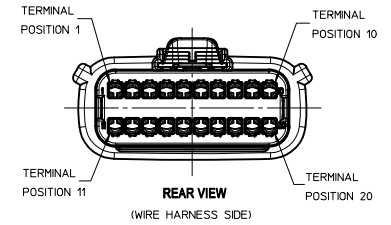


NOTES: UNLESS OTHERWISE SPECIFIED

- DESIGNED TO MATE WITH THE BLADE HOUSING ASSEMBLY SPECIFIED IN MOLEX CHARTED DRAWING SD-33482-201 OR DEVICE CONNECTION AS SPECIFIED IN USCAR DRAWING 150-S-020-2-Z01.
- ASSEMBLY SHIPPED WITH RECEPTACLE INSERT IN PRE-LOCK POSITION (SEE SECTION B-B PRE-LOCK). UPON FULL TERMINAL ASSEMBLY, EACH RECEPTACLE INSERT MUST BE SNAPPED INTO ITS FINAL-LOCK POSITION.
- FOR RECEPTACLE TERMINALS TO BE USED WITH THIS ASSEMBLY. SEE MOLEX DRAWING SD-33012-002.
- SYSTEM TO BE USED WITH WIRE WITHIN DIAMETER RANGE OF 15mm TO 2.5mm.
- OPTIONAL CPA SHOWN IN ALL VIEWS. SEE TABLE FOR SPECIFIC ASSEMBLY OPTION AND NUMBER. CPA MUST BE INSERTED TO THE PRE-LOCK POSITION. AS SHOWN IN SECTION B-B. WHEN SEATED CORRECTLY, CPA DOES NOT MOVE FREELY. ENGAGEMENT FORCE TO MOVE CPA FROM PRE-LOCK TO FINAL LOCK POSITION WHEN UNMATED: 40N MIN. DISENGAGEMENT FORCE TO MOVE CPA FROM FINAL LOCK TO PRE-LOCK POSITION: 3N MIN.
- MATERIAL: SPS/NYLON BLEND, 20% GLASS FILLED.
- REFER TO SHEET 2 OF THIS DRAWING FOR ALL PART NUMBER CONFIGURATIONS.
- SHALL CONFORM TO PACKAGING SPECIFICATION PK-30907-895.
- SHALL CONFORM TO PRODUCT SPECIFICATION PS-33472-000.
- PACKAGING: IN THE EVENT THAT INSERT IS FOUND IN THE SEATED (FINAL LOCK) POSITION, REFER TO MOLEX SPECIFICATION PS-34646-001, AVAILABLE AT WWW.MOLEX.COM.
- ASSEMBLY CONFORMS TO SAE/USCAR-2 REV 4 WITH THE FOLLOWING EXCEPTIONS:
TPA REMOVAL FROM FINAL LOCK TO PRE-LOCK POSITION SHALL NOT EXCEED 130 NEWTONS.



SECTION A-A



SCALE 1:1

REDRAWN EC NO: UAU2009-0513 DRAWN BY: CHYKORRFFI THS 2008/11/20 CHECKED BY: APPR:IKOSHY 2008/11/20 DESCRIPTION:	QUALITY SYMBOLS ▽=0 ▽=0	GENERAL TOLERANCES (UNLESS SPECIFIED) 4 PLACES ± .--- ± .--- 3 PLACES ± .--- ± .--- 2 PLACES ± 0.10 ± .--- 1 PLACE ± 0.3 ± .--- ANGULAR ± 3 °	DIMENSION STYLE MM ONLY	SCALE 2:1	DESIGN UNITS METRIC	THIRD ANGLE PROJECTION
	DRAWN BY: DGRIFFI THS 06/17/2003 CHECKED BY: DGRIFFI THS 06/17/2003 APPROVED BY: DGRIFFI THS 06/17/2003	DATE: 06/17/2003 DATE: 06/17/2003 DATE: 06/17/2003	TITLE MX150 RECEPTACLE CONN ASSEMBLY 2 ROW SEALED 20 WAY	MATERIAL NO. SEE CHART	DOCUMENT NO. SD-33472-201	SHEET NO. 1 OF 2

ASSEMBLY PART NUMBER	CPA	COLOR	KEYING OPTION	DIMENSIONS (DEGREES)		CAVITY TYPE & STATUS (X = PLUGGED)																			
				A	B	1	2	3	4	5	6	7	8	9	10	11	12	13	14	15	16	17	18	19	20
33472-2001	-	BLACK	A	60	60																				
33472-2002	-	LT. GRAY	B	60	25																				
33472-2003	-	BROWN	C	25	60																				
33472-2004	-	GREEN	D	25	25																				
33472-2005	-	CUSTOM	TBD	TBD	TBD																				
33472-2006	YES	BLACK	A	60	60																				
33472-2007	YES	LT. GRAY	B	60	25																				
33472-2008	YES	BROWN	C	25	60																				
33472-2009	YES	GREEN	D	25	25																				
33472-2010	YES	CUSTOM	TBD	TBD	TBD																				
33472-2011	YES	BLACK	A	60	60																			X	
33472-2012	-	BLACK	A	60	60										X										
33472-2013	-	BLACK	A	60	60				X	X	X	X						X	X	X	X				
33472-2014	-	BLACK	A	60	60							X							X						
33472-2015	YES	BLACK	A	60	60	X						X			X				X				X		
33472-2016	YES	BLACK	A	60	60		X					X			X								X		
33472-2017	YES	BLACK	A	60	60							X		X	X				X	X					
33472-2018	YES	BLACK	A	60	60							X	X	X										X	
33472-2019	YES	BLACK	A	60	60	X	X																	X	
33472-2020	YES	BLACK	A	60	60	X	X					X	X											X	
33472-2021	YES	BLACK	A	60	60	X	X					X	X	X	X									X	
33472-2022	YES	BLACK	A	60	60															X			X		
33472-2023	YES	BLACK	A	60	60																X		X		
33472-2024	YES	BLACK	A	60	60	X															X	X	X		
33472-2025	YES	BLACK	A	60	60		X	X	X				X							X	X				
33472-2026	YES	BLACK	A	60	60		X	X				X								X				X	
33472-2027	YES	BLACK	A	60	60		X	X	X			X								X				X	
33472-2028	YES	BLACK	A	60	60	X	X	X				X								X	X	X	X	X	
33472-2029	YES	BLACK	A	60	60	X	X	X				X								X	X	X		X	
33472-2030	YES	BLACK	A	60	60	X	X	X				X								X				X	
33472-2031	YES	BLACK	A	60	60		X	X				X								X				X	
33472-2032	YES	BLACK	A	60	60							X			X	X	X							X	
33472-2033	YES	BLACK	A	60	60							X			X	X	X				X	X		X	
33472-2034	YES	BLACK	A	60	60		X	X				X			X					X	X			X	
33472-2035	YES	BLACK	A	60	60	X	X					X	X	X	X	X				X				X	
33472-2036	YES	BLACK	A	60	60	X	X					X	X	X						X				X	
33472-2037	YES	BLACK	A	60	60							X	X	X	X	X				X				X	
33472-2038	YES	BLACK	A	60	60							X	X	X	X	X								X	
33472-2039	YES	BLACK	A	60	60							X	X	X						X				X	
33472-2040	YES	BLACK	A	60	60		X					X	X	X						X	X	X		X	
33472-2041	YES	BLACK	A	60	60		X	X	X			X	X	X						X	X	X		X	
33472-2042	YES	BLACK	A	60	60		X					X	X	X						X	X	X		X	
33472-2043	YES	BLACK	A	60	60	X	X	X	X			X	X	X						X	X	X		X	
33472-2044	YES	BLACK	A	60	60	X	X	X	X			X	X	X						X	X	X		X	
33472-2045	YES	BLACK	A	60	60	X	X	X	X			X	X	X					X	X				X	
33472-2046	YES	BLACK	A	60	60	X	X	X	X			X	X	X						X	X	X		X	
33472-2047	YES	BLACK	A	60	60		X	X	X											X	X	X		X	
33472-2048	YES	BLACK	A	60	60		X	X	X											X	X	X		X	
33472-2049	YES	BLACK	A	60	60		X	X	X											X	X			X	
33472-2050	YES	BLACK	A	60	60		X	X	X											X	X	X		X	
33472-2051	YES	BLACK	A	60	60	X	X	X												X	X	X		X	
33472-2052	YES	BLACK	A	60	60	X	X	X												X	X			X	
33472-2053	YES	BLACK	A	60	60	X	X	X												X	X	X		X	
33472-2054	YES	BLACK	A	60	60	X	X	X												X	X			X	
33472-2055	YES	BLACK	A	60	60		X													X				X	
33472-2056	YES	BLACK	A	60	60																			X	
33472-2057	-	BLACK	A	60	60		X	X				X								X				X	
33472-2058	YES	BLACK	A	60	60															X	X	X		X	

REVISED EC NO: UAU2009-0513 DRAWN BY: 2008/11/19 CHKD BY: CHYKOBORFF 2008/11/20 APPR: VKOSHY 2008/11/20	QUALITY SYMBOLS ▽=0 ▽=0	GENERAL TOLERANCES (UNLESS SPECIFIED) mm INCH 4 PLACES #--- #--- 3 PLACES #--- #--- 2 PLACES #0.10 #--- 1 PLACE #0.3 #--- ANGULAR ± 3°	DIMENSION STYLE MM ONLY	SCALE 2:1	DESIGN UNITS METRIC	THIRD ANGLE PROJECTION	TITLE MX150 RECEPTACLE CONN ASSEMBLY 2 ROW SEALED 20 WAY
MATERIAL NO. SEE CHART	DATE 06/17/2003	CHECKED BY DGR1FF1THS	DATE 06/17/2003	APPROVED BY DGR1FF1THS	DATE 06/17/2003		MOLEX INCORPORATED
SIZE D	DRAFT WHERE APPLICABLE MUST REMAIN WITHIN DIMENSIONS	DOCUMENT NO. SD-33472-201	SHEET NO. 2 OF 2	THIS DRAWING CONTAINS INFORMATION THAT IS PROPRIETARY TO MOLEX INCORPORATED AND SHOULD NOT BE USED WITHOUT WRITTEN PERMISSION			